

# Malmo Click 5GC Flooring

## Installation Instructions:

### Important notice:

The key to long term performance of any floor is the quality of the sub floor preparations conducted, the installation procedure being correct and the immediate and ongoing care and maintenance procedures used on the floor.

To help ensure the installation is carried out correctly, please make sure this instruction leaflet is fully read and adhered to by you / your floor installer. Ideally the installer should be an appropriately trained flooring installer and be suitably competent to carry out the pre installation sub floor checking & preparation procedures and installation as per these instructions.

### Suitability & Limitations:

Malmo click 5GC floors are suitable for most domestic internal rooms and light/medium use commercial rooms such as small to medium sized shops & offices. Malmo click flooring is not suitable or warranted for use in any heavy commercial / industrial use areas such as large public, high foot traffic, use buildings etc – ie train station /airport concourses and any areas of this type.

If any doubts exist, in terms of suitability, as to your intended residential or commercial installation clarify your intended use / installation with your supplier prior to the installation commencing as it is the installers responsibility to ensure the product is suitable for the end use rooms/areas.

#### NOTE !

Malmo click flooring is not guaranteed, for use in conservatories or sun rooms as extreme variations in temperature, particularly behind glass doors, can occur which may affect the stability of the product.

Malmo click flooring is also not guaranteed for use over any form of **radiant heat under floor heating system (UFH)**.

**If Malmo click flooring is installed in either of the above usage areas then the associated Malmo LVT product guarantee is not applicable and the product is used and installed at the installer & owners own risk.**

If a non guaranteed use is realised at the point of installation do not install the flooring and make the owner aware of this stipulation for the product and seek their written confirmation if they decide to proceed with the install.

### Installer / Owner Responsibilities:

The intended installation room/area should have a consistent temperature of 18 – 22 Deg C and stable environment prior to, during, and following installation during ongoing use.

**It is the installer's responsibility** to carry out the final inspection of the panels / flooring to ensure the colour, quality, and factory finish of the product is acceptable and that **no visual defects are present to any of the boards / tiles before they are installed**. The installation of any boards / tiles with clear or obvious visual defects or blemishes will invalidate the product warranty and is not grounds for complaint.

**Upon receipt of the packs** check the batch numbers on the end of them to ensure they batch numbers all match and

that no delivery damage is present. If any issues are found report and discuss them with your flooring supplier before opening and installing them.

Carefully examine the flooring for colour, finish, damages and quality before installing it. The installer must use reasonable selectivity and select out, or cut off pieces, with deficiencies, whatever the cause. If the product overall is deemed not acceptable for any reason, do not install it and contact your supplier immediately.

**Prior to installation** of any flooring product, **the installer** must determine that the job site environment and the sub floor surfaces involved meet, or exceed, the recommendations and instructions contained within this leaflet and all applicable industry European and British standards.

**If any non recommended or non guaranteed usage restrictions are applicable to your particular installation then ensure the decision to use the product is confirmed by the property owner as to install the product implies acceptance of the usage limitations. No product failure claims will be accepted where the flooring has been installed into any advised unsuitable or guarantee restricted areas/ rooms / over any un recommended sub floors.**

Recommendations regarding the construction of the materials used as well as local codes must be followed. These instructions recommend that the construction and sub floor be suitably dry, stiff, of suitable load bearing strength and flat, (as per B.S. 8201: 2011 & B.S. 8204-1: 2003).

**Malmo click flooring has a thin foam backing layer on its underside which acts as an underlay layer and subject to the sub floor surface being suitably flat (as per above BS standard) the flooring does not need a separate underlay and is designed to be installed without any additional underlay.**

The manufacturer and distributor declines any responsibility for job failure resulting from, or associated with, sub-surfaces, sub flooring or job-site environmental deficiencies, incorrect storage of the product, lack of or incorrect sub floor preparations and installation errors.

It is important that the installer checks each board / tile for any type of defect. Any minor defects or objectionable elements within individual boards / tiles should be dealt with by trimming and or cutting of the panels as is normal good installation practice accommodated for by the wastage factor tolerance added to the job quantity.

## **1 - Pre installation Procedures & Checks:**

- Calculate the total square meters or square footage of the room(s) and add a minimum of 5% for cutting and waste.

- The packs of flooring should be placed in the room in which they are to be fitted **for a minimum of 48 hours** and should be carefully stacked on **A FLAT SURFACE WITH THE PACKAGING LEFT UNOPENED,**  
**DO NOT STACK THE PACKS TOO HIGH.**

The packs should be **stored and laid in a stable, heated, room environment with a room temperature of between 18°C and 22°C.**

**The packs must not be stored outside or in unheated garages, sheds or outbuildings or be stored directly behind glass doors in direct sunlight or be subjected to any direct heat source such as radiators & fires as distortion of the packs and boards may occur particularly if the packs are not stored a flat surface.**

- All substrates must be solid, structurally sound, suitably dry, clean and particle / debris free. As Malmo click flooring is a relatively thin product **the sub floor surface must suitably flat** - i.e less than 2mm from flat per 2 lin mt.

**Carry out any remedial works necessary to ensure the sub floor is less than 2mm from flat before installing this product.**

**Concrete sub floors must have a moisture content by volume of below 3% and or a relative humidity of less than 65% when checked with a hygrometer in accordance with B.S. 8201: 2011 & B.S. 8204-1: 2003.**

**Wood or wood based sub floors must not have a moisture content in excess of 12%.**

The sub floor surface should be free of all contaminants and loose material and must be appropriately flat dry and sound. If any doubts exist as to the suitability of your sub floor have it checked, and repaired if necessary, by an appropriate professional.

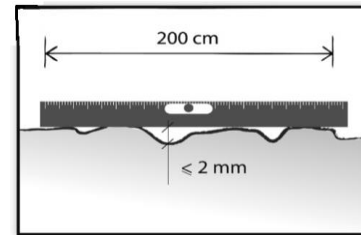
- Where possible the boards / tiles should be installed lengthways towards the main incoming light source and, where possible, down the length of the room parallel to the longest wall.

**If installing onto a new or existing concrete or screed base**

- If a new concrete sub floor has been installed checks must be made in accordance with B.S. 8201: 2011 & B.S.

8204-1: 2003 to ensure the moisture content and humidity of the slab is appropriate in line with the above industry standards.

New and existing sub floor surfaces **must be solid, sound and flat** to less than 2mm variance per 2 linear meter run of sub floor as per B.S.8204-1:2003.



**NOTE ! – an uneven sub floor surface can result in boards flexing excessively which can result in joint failures, gapping, floor movement, excessive wear to high spots and noises occurring. Telegraphing of sub floor undulations, rough spots or high points can also occur all of which resulting issues are not covered by the product warranty.**

### If installing onto a wooden sub floor

Malmo click flooring can be installed directly over prepared SOLID & FLAT floorboards. **If necessary over lay with plywood sheets (minimum 6mm thickness) and screwed down in accordance with BS 8201: 2011, allowing a minimum 6mm perimeter gap for expansion.**

**Please note:** Where screws are being used to secure an overlay, check for the existence of any pipes or electric cables etc under the existing sub floor and take appropriate not to damage or pierce any pipes or electrical cables beneath.

Ensure the ply sub surface is sound and appropriately flat, less than 2mm deviation over a 2 meter run as shown above.

**Chipboard or ply paneled sub floors** that are appropriately sound, dry and flat are suitable.

If the existing wooden sub floor is not suitably sound and any areas deflect or bounce underfoot then the sub floor must be made stable and sound before the flooring is installed.

## **2 - Installation Method:**

Your Malmo click 5GC flooring is designed to be installed as a “floating” floor in that the boards or tiles should be located together using their click profile edges and laid dry (unglued) directly over your checked and prepared sub floor.

Your Malmo flooring **does not require any separate form of soft underlay material beneath it** and should be laid directly onto your flat, and prepared as necessary, solid sub floor surface.

If a separate underlay is laid and the Malmo flooring laid on to of it excessive deflection of the board joints may occur and joint failure or opening of joints may result.

Any loose, soft or unsound existing floor coverings, e.g. lino, carpet etc, should be removed prior to installation of your new Malmo floor and the existing sub floor be checked and prepared as necessary to ensure it is appropriately flat, dry and sound as per the instructions above and relevant industry sub floor standards.

It is very important that the installation carried out is as per the following instructions **as the warranty offered with this product is only valid if the installation instructions have been correctly followed.**

### Floating Floor installation

Minimum Tools required (not supplied) :-

Utility knife	Square edge
Jigsaw or Hand saw	Pencil
Tape measure	Chalk Line
6mm Spacers	Gloves & Goggles for cutting boards.

### **Key installation points.**

Before installation of the flooring begins ensure all necessary sub floor checks, remedial work actions and preparations have been completed.

Your flooring has a click long edge profile and a 5GC click locking short end profile and is made to be installed as a floating floor **without using adhesive** on the board joints.

Leave an open **expansion / movement gap of 6mm** around **the whole perimeter edge of the flooring**, (use 6mm distance wedges or spacers), and around any pipes, stairs, columns, doorframes, doorway thresholds and where the flooring meets any fixed object.

Undercut door frames / jambs sufficiently to accommodate the flooring and required expansion gaps.

Where the flooring run exceeds **10 linear meters in width or length** insert in an “in floor” 6mm expansion / movement gap by using an appropriate “T” mould section profile.

Malmo click flooring is more stable than tradition LVT flooring however it can still expand and contract slightly when temperatures increase or decrease so the stated expansion / movement gap must be left at all edges, including cut outs around fixed objects, of the flooring so **do not install any boards tight** to any construction part of the building or adjoining floors.

**Separate your Malmo flooring between adjoining rooms at door thresholds**, (even if Malmo click is laid in adjoining rooms), using an appropriate T moulding profile as this ensures that the flooring in each room can move independently of its neighboring floor.

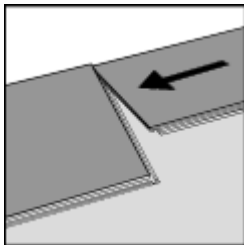
The installer must open and **mix /select boards from several packs at a time** during installation to ensure a good mix of boards overall and colour blend is achieved.

### Installation of the boards.

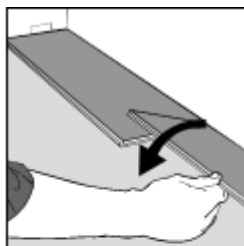
Measure the width of the room to be fitted and divide the size by the width of the board / tile to be installed, From this calculate the width of the final row of boards and if the width of this row is less than 50mm cut the width of the first row of boards to an appropriate width size so as to ensure the width of the final row of boards exceeds 50mm and is visually comparable to the first row. (take care to retain in place the cut section of the short end locking strip)



1. First board, first row. Place 6mm expansion gap spacers against the walls or skirting boards at the left hand end, and back long edge, of the first board and position the board end against the wall. The tongue on the back edge of the board should be against the spacers on the facing wall.

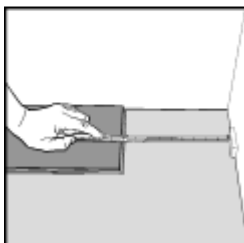


2. Second board, first row. Locate the board end into the short end of the first one ensuring the front and back edge line up accurately.

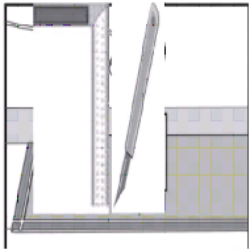


3. Fold the board down with a single action movement to locate the header joint **ensuring the joint “clicks” and locks.**

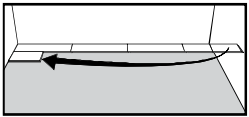
Continue with the next boards in the same manner.



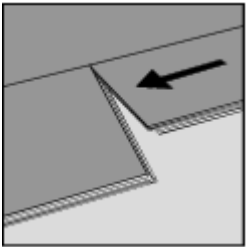
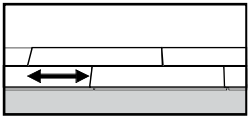
4. At the end of the first row, place a 6mm expansion gap spacer against the right hand wall or skirting board, and measure the length of the last board to fit.



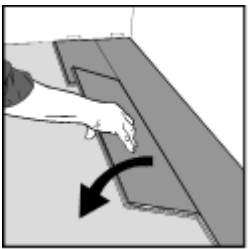
5. To cut the final board to length. Measure and score the board upper surface using a straight square edge and sharp utility knife and snap along the score line. Score through the reverse face once snapped if necessary. Insert the cut piece to complete the first row. Take extreme care when using the utility knife to avoid injury. Use appropriate gloves.



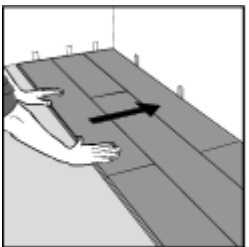
6. Second row. First board, min length 400mm for plank wood effect decors or 228mm half lap for tile effect decors. Use the off cut from the final first row board, (for wood plank decors if it is 400mm or longer), or half length cut a tile décor, to start the second row of boards, Again leave an expansion gap of 6mm against the left hand wall or skirting board. Ensure a minimum 150mm distance between the short end joints of the boards laid in the previous row, (ideally a half distance overlap), and the new row being laid.



7. Second board second row. Locate the long edge tongue of the board into the long edge groove of the previously laid row.



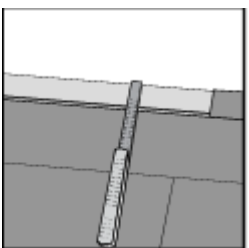
8. Place the board tight to the short end of the previous board and fold down in a single action movement **ensuring the short joint “clicks” and locks correctly.**



9. After 2-3 rows. Adjust, if needs be the distance between the front wall or skirting and the flooring edge and ensure adequate numbers of 6mm spacers are in place to keep the flooring edge a minimum 6mm away from the wall or skirting at all points along this edge.

Continue laying all following rows of boards in this manner until the last row of boards is reached.

**Final Row.** – Cut the boards to width.



10. Measure the width of the final row of boards The minimum 6mm expansion gap must again be left at the edge

Cut the boards to width and locate together as previous boards **ensuring the cut section**

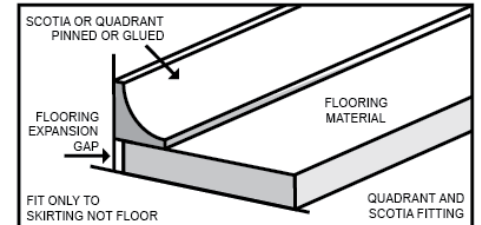
of plastic locking strip is in place in the header joint.

Cutting around pipes and obstructions in the floor.

Ensure any fixed objects and radiator pipes etc within the floor are cut around appropriately leaving the 6mm expansion / movement gap around the fixed object

### Completing the installation

Once the flooring is installed remove all expansion spacers and cover the expansion gaps by either re-fitting the skirting boards or alternatively, attaching a suitable bead or scotia trim **to the skirting** using glue or panel pins.



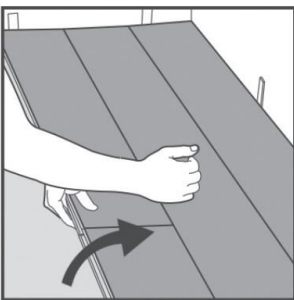
### Doorways / Door thresholds:

At doorways an appropriate "T" moulding threshold strip should be used to separate adjoining Malmo click floors, or other floor coverings in other rooms, to provide the required 6mm expansion / movement gap and to protect the edges of the floor.

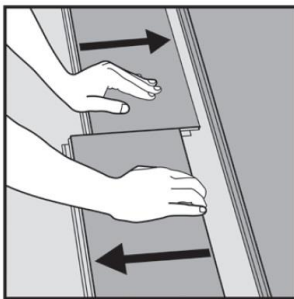
The T moulding **must not** be fixed to the flooring itself but should be fixed to the sub floor.

### Separating / replacing boards.

Should it be necessary to remove or replace any boards it can be done relatively easily.



First, separate the entire row by carefully lifting it until the long joints release.



Second, **Slide the short joints** of the board to be removed **horizontally in opposite directions**. **DO NOT** lift the end of a board to separate it as this will damage the end joint.

# CARE AND MAINTENANCE

**\*\* Please leave these instructions with the owner of the floor. \*\***

Correct care and maintenance of you Malmo click floor will help ensure your floor always looks its best and will aid its long term reliability and performance.

**Following installation and for routine care and maintenance please follow these simple instructions:**

## Immediately following installation & Ongoing care & maintenance

- Thoroughly clean your floor by using “**Bona Tile & Laminate Floor Cleaner**” which is a hard surface cleaner also suitable for vinyl floor coverings.
- Vacuum or sweep the floor weekly, or more frequently if required. The vacuum head must be brush or soft felt. Do not use a vacuum that has beater bars or a hard metal head.
- A floor swivel head flat mop with replaceable cloth cover is highly recommended to eliminate finer particles of dirt and grit that may build up on the floor.
- Spillages and tracked in dirt should be wiped off the floor immediately.

**Do not** use general purpose cleaners, abrasive cleaners or cleaners containing bleach or oils.

The recommended Bona cleaner should be available through you flooring supplier.

## Things to “do” and be aware of:

- **DO** - Make use of door mats at all external entrances and over high traffic areas of the floor as this will significantly help to avoid dirt and grit being walked on to the floor.
- **DO** – Clean the floor with the recommended cleaning products as they are designed to clean your floor effectively and not damage it in any way.
- **DO** - Use furniture protection pads under all furniture legs and feet as this will avoid damage being caused by the movement of furniture across the floor. Use mats at desks, under chairs and in front of any furniture or units where footfall is continual in a small specific area such as in front of sinks and cookers. This will avoid damage and excessive or accelerated wear from castors, chair feet and specific continual footfall in these areas.
- **DO** - Protect your floor from constant direct & intense sunlight where possible using mats blinds or curtains, **particularly behind glass doors** as areas subjected to constant sunlight immediately behind glass doors may discolour at an accelerated rate compared to shaded areas of the floor and board movement may occur due to high floor surface temperatures occurring where sunlight is intensified by the glass.

## Very important “dont’s” and things to avoid:

- **DON'T** - Walk on the floor in narrow hard, or stiletto type, heels as this may damage the surface of the flooring.
- **DON'T** – Slide heavy furniture or objects across the floor as this may also damage the surface.
- **DON'T** – cut & fit any boards tight to any fixed objects. All perimeter edges of the flooring must have the stated expansion gap available to it.
- **DON'T** – Screw any fixings into the flooring itself as this may impede slight contraction & expansion of the floor should it occur.
- **DON'T** – Use ammonia based cleaners, acrylic finishes, wax based products, general detergents, bleaches, polishes, abrasive soaps or cleaners, or any acidic based cleaners. These type of cleaners can fade, etch or pit the surface of your flooring.
- **DON'T** – **Steam clean** your Malmo floor as hot steam may cause movement issues and affect the product surface.
- **AVOID** - Letting pets with claws run across the flooring and always keep pets claws trimmed as animal claws may scratch the surface of the floor.

## Warranty Information

Your Malmo click flooring comes with a 15 year limited residential use, and 7 year light commercial use, warranty against wear through of the décor layer under normal foot traffic when the product is used in appropriate areas and installed & maintained correctly as per these instructions.

To maintain the validity of your Malmo flooring warranty your floor must be installed, cleaned and maintained in accordance with the published installation, care and maintenance details.

Please note that any longer term renovation of your floor involving repairing will render the original warranty invalid.

A copy of the Malmo click limited manufacturing defect warranty is available upon request from your flooring supplier.

This warranty is subject to English law and to the exclusive jurisdiction of the English Courts.

### What to do if you have any problems.

If there is a problem with your flooring you must first attempted to contact your supplier and/or installer to report the issue with your product and have requested an initial inspection of the products by your supplier and/or installer. Following this, but within 28 days from the date that the defect arose or became apparent, if it is believed that a manufacturing defect is the cause of the problem with the product, you should contact Malmo flooring via the Malmo flooring website – [www.malmoflooring.com](http://www.malmoflooring.com)

It is likely that the supplier/installer/distributor will wish to inspect the product and the purchaser must allow reasonable access to the product in order for such inspection to take place.

It is strongly recommended that proof of purchase and any associated documentation, (for example, written documentation confirming the sub floor preparations and checks made prior to installation of the Product), are kept in a safe place as proof of purchase and any associated documents will be requested before any investigation takes place.

### Disclaimer:

We reserve the right to make amendments to these instructions without prior notification. Ultimate responsibility for checking and preparing the sub floor surface, and correctly installing the flooring as per these instructions, lies solely with the installer.

E&OE.